

LAD8C

Project Name:	
Type:	



APPLICATION

8" Horizontal commercial frame-in is non-insulated ceiling design for high wattage application with lens. Ideal for medium to high ceilings for commercial installations.

FEATURES:

- Galvanized steel plaster frame: Quality galvanized steel ring riveted to elevated steel junction box tray.
- Housing can be removed from plaster frame for junction box access.
- Mounting: Bar hanger allows fixtures to affix to T-bar grid into wood or steel joist members.
- 16-gauge galvanized steel construction.
- Maximum 1-1/2" ceiling thickness.
- Toolless adjustments post installation.
- Unique optic allows high lumen transmission while concealing the LED light source resulting in efficient, inviting light and minimizing LED glare.
- Non-insulated ceilings or where insulation can be kept 3" from all side of housing.

JUNCTION BOX:

- Galvanized steel junction box with seven 1/2" knockouts, four pryouts, and snap on cover.
- Electrical connections are made through a single junction box door.
- Access to junction box from below ceiling after removal of reflector for easy maintenance.

BAR HANGERS:

- Pre-installed adjustable bar hangers for span 24".
- No clips required. Secure bar hanger to T-bars with wires or screws.
- Integral captive nails included for fast and easy installation.

LED:

- CREE LED technology.
- 50,000 hours.
- 4000K color temperature standard.
- 16W, 25W, 38W, 50W, 70W, 100W LED.
- Color Rendering Index: > 90
- Projected L70 hours: 60,000

ELECTRICAL:

- Input voltage: 120-277V
- 3 in 1 dimming: Triac (120V only), 0-10V (dim to 1%, 120-277V), ELV (120V only).
- Operating Temperature: -4°F (-20°C) ~ 104°F (40°C)
- Thermal protection.
- Surge protection (3kV line to line, 6kV line to earth).
- Protections: Output open load, over-current and short-circuit(hiccup), and over-temperature with auto recovery.
- Conducted and radiated EMI: Compliant with FCC CFR Title 47 Part 15 Class B (120 Vac)/ Class A (277 Vac) and EN55015 (CISPR 15) at 220/230/240 Vac.

<ELCU-200>

- Guarantees emergency lighting remains ON or is turned on when power to the control device is lost.
- Interfaces with fire alarm panel or security system.
- "Watchdog" feature allows emergency loads to be controlled in tandem with normal power loads.
- UL listed for use in emergency circuits.

LISTING:

- UL/CUL listed for damp locations with covered ceiling.
- UL/CUL wet location listed with "W" lens only.
- Listed to UL 1598 and UL 8750.
- Minimum 75°C supply conductors.
- CSA certified to US.
- Energy Star certified. ⁵
- 5 years limited warranty.
- 10 years limited warranty (optional). ^{7,8}
- ARRA compliant (optional).
- BAA compliant (optional).

ORDERING INFORMATION

EXAMPLE: LAD8C-25L-40K-UNV-EMI15-WW-W-O60

MODEL		LED				COLOR TEMP.		VOLTAGE		LED DRIVER	
				Lumen Output	Lumen Efficiency						
LAD8C	8" Commercial Frame	16L	16W LED	1458 lm	90.6 lm/W	-27K	2700K	UNV 347	120-277V 347V ⁴	DM	- Triac (120V Only)
		25L	25W LED	2302 lm	92.1 lm/W	-30K	3000K				- 0-10V (dim to 1%, 120-277V)
		38L	38W LED	3035 lm	82 lm/W	-35K	3500K				- ELV (120-277V)
		50L	50W LED	3904 lm	80.8 lm/W	-40K	4000K (Std.)				0-10V dim to 1%
		70L	70W LED	5920 lm	84.2 lm/W	-50K	5000K				5%, Lutron (Ecosystem) ²
		100L	100W LED	7070 lm	70 lm/W	-275K	Tunable white				1%, Lutron (Soft Fade to Black, Ecosystem) ²
		107L	107W LED	7830 lm	73.2 lm/W		2700-5000K (Max. 50W) ³				0-10V dim to 1% for -275K (Tunable White)
											eldoLED LightShape DALI dim to dark, 0.1% ~ 100%
											eldoLED POWERdrive DMX/RDM Full-color, 0.1% ~ 100%
											SDXX XX% / 100% Bi-Level Step dim (Specify XX : 10%~70%) ¹²

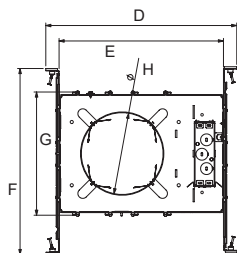
EM ^{9,10}		REFLECTOR		TRIM RING		LENS		OPTIC	
EMI15	2430 LUMEN EM Battery Backup	WW	White Reflector w/ White Plastic Ring	(Blank)	White Trim Ring	(Blank)	Dry / Damp location	O20	Narrow
EMI25	4050 LUMEN EM Battery Backup	CW	Clear Reflector w/ White Plastic Ring	BK	Black Trim Ring	W	White Smooth Splay w/ Frosted Lens (Wet Location) ¹¹	O40	Medium
INT	EM Pilot Located on Reflector	PLW	Platinum Haze Reflector w/ White Plastic Ring					O60	Wide (Std.)
								WA	Wall Wash

8" COMMERCIAL NEW CONSTRUCTION FRAME

OPTIONS		LIGHTING CONTROL SYSTEM	
ARRA	Assembled in USA for Buy American Act	VRF	<Lutron Vive System Enabled> Vive Integral fixture control (RF only, for Lutron EcoSystem drivers)
BAA	BAA(Buy American Act) and BABA(Build America Buy America) compliant	FCJS0	FCJS-010, Vive Attached fixture control (RF only for 0-10V drivers)
ELCU-200	Fail-to-on Emergency lighting, UL924 ¹	FCJSE	FCJS-ECO, Vive Attached fixture control (RF only for Lutron EcoSystem drivers)
GTD	Bodine Generator Transfer Device	FCJS0EM	FCJS-010-EM, UL 924 Emergency (Must be ordered with FCJS-010)
GTD10DIM	Bodine Generator Transfer Device (0-10VDC Dimmer Override)	FCJSEEM	FCJS-ECO-EM, UL 924 Emergency (Must be ordered with FCJS-ECO)
FRAME	Rough-in frame pre-ship request ⁶		
O10W	Optional 10 Years Limited Warranty ^{7,8}		
SF	Self-flanged trim	PPA102S	<Bluetooth> Bluetooth Powerpack (Consult factory for installation location)

NOTES:

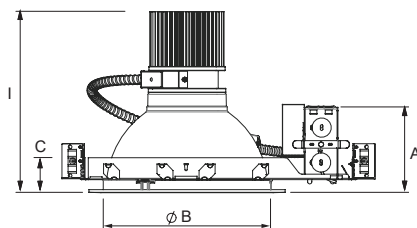
- Shipped separately.
- Available with 16L, 25L and 38L only.
- Must be ordered with ED560 or MU050 driver.
- Only available up to 38W.
- 38L model is exempt.
- LED driver and EM (if selected) will be included.
- This limited warranty covers electrical parts only and does not apply to labor, equipment lease, or defect from improper installation or operation.
- Available with 0-10V dimming only. (Up to 50W)
- Contact factory for other emergency battery backup options.
- Must specify voltage, not available with 347V, 480V.
- There is a 33% lumen decrease.
- Provided with a remote driver box.



Dimensions

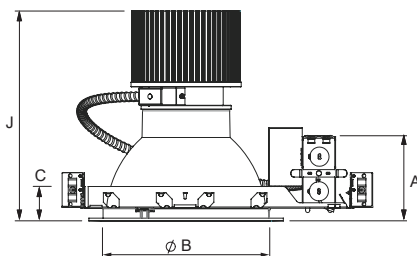
- D: 15-5/16" (389.2)
- E: 12-19/32" (320)
- F: 16-1/8" (410)
- G: 9-7/16" (240)
- H: 6-1/4" Dia. (159)

All dimensions are in inches.
Drawings are for dimensional detail information only.



Dimensions (16W, 25W, 38W, 50W)

- A: 3-15/16" (100.6)
- B: 6-5/16" Dia. (160.6)
- C: 1-1/2" (38)
- I: 8-1/2" (214.9)



Dimensions (70W, 100W)

- A: 3-15/16" (100.6)
- B: 6-5/16" Dia. (160.6)
- C: 1-1/2" (38)
- J: 9-15/16" (251.9)

COMPATIBLE DIMMER SWITCH (TABLE 1)

Model #	Brand	Compatible Dimmer Switch	
DM (0-10V, dim to 1%)	-	<Leviton>	IllumaTech series (IP710-DL)
		<Lutron>	Nova series (NFTV-xx), Diva series (DVTV-xx)
DM (120Vac for Triac, ELV)	-	<Lutron>	S-603PG, DVCL-153P, DV-600P, TGCL-153P, S600P, DVELV-303P, SELV-300P, TG-600P, LG-600P, CT-103P, MAELV-600, FAELV-500
		<Leviton>	IPI06-1LZ, 6631-2, VPE06, 6683-IW, 6161, 6633-P, IPE04
		<Cooper>	DLC03P, SLC03P, DAL06P
		<Lightolier>	ZP260QEW
ED560	eldoLED DUALdrive	<Lunatone>	SS-LUNAT PS2 30mA SS-LUNAT Touch or BT SS-LUNAT Comm
LDE1	Lutron Hi-lume 1% EcoSystem	<Lutron>	PowPak Dimming Modules: RMJ-ECO32-DV-B, FCJ/FCJS-ECO Energi Savr Node (120V only): QSN-1ECO-S, QSN-2ECO-S GRAFIK Eye QS/Homeworks QS control unit (120V only): QSGRJ-_E(wireless) QSGR-_E Quantum Hub (120V only): QP2-_2C/4C/6C/8C Homeworks QS/myRoom Plus power module (120V only): LQSE-2ECO-D
LDE5	Lutron 5-Series EcoSystem		

LAD8C

BEAM ANGLE (OPTIC) TABLE

Wattage	LAD4-CW			LAD6-CW			LAD8-CW		
	O20	O40	O60	O20	O40	O60	O20	O40	O60
16W	23.1°	42.8°	57.8°	21.6°	36.8°	56.6°	23.1°	39°	58.2°
25W	25°	44.3°	58.9°	23.8°	39.1°	58.1°	24.7°	40.5°	59.1°
38W	34.8°	53.6°	60.2°	31.9°	48.8°	59.9°	33.1°	53.9°	61.4°
50W	34.3°	51.2°	59.7°	31.8°	47.4°	58.7°	33.4°	50.1°	61.7°
Wattage	LAD4-WW			LAD6-WW			LAD8-WW		
	O20	O40	O60	O20	O40	O60	O20	O40	O60
16W	22.9°	40.8°	52.7°	22.7°	40.7°	55.2°	22.5°	39.2°	57.8°
25W	24.3°	41.6°	53.5°	24.6°	41.5°	56.3°	24.5°	40.3°	58.7°
38W	34.3°	48.5°	55.6°	34.1°	50.8°	58°	33.5°	49.2°	62.5°
50W	33.7°	46.9°	55.3°	33.6°	48.6°	58°	33.7°	47.3°	63.3°
Wattage	LAD4-PLW			LAD6-PLW			LAD8-PLW		
	O20	O40	O60	O20	O40	O60	O20	O40	O60
16W	22.7°	42.1°	54.9°	22.2°	40.4°	54.6°	23°	39.3°	57.7°
25W	24.7°	43.8°	55.5°	24.6°	42°	55.3°	24.5°	40.6°	58.5°
38W	35.6°	51.9°	58°	34°	49°	58°	33.3°	50.1°	60.7°
50W	34.9°	49.3°	57.5°	33.3°	48.5°	57.4°	33.6°	47.4°	61.3°

