

# LHB-3G

Being discontinued and replaced with LHB-4G  
Limited Stock Available



### APPLICATION

The LED High Bay is the lighting solution for a wide variety applications that require specific mounting heights. Precision-designed optics, multiple distributional options, lumen outputs and color temperatures choices make the energy-efficient LHB the ideal resolution for industrial, commercial and other high bay applications.

Project Name:	
Type:	

### FEATURES:

- Die formed, cold-rolled, heavy gauge steel housing.
- Glare Control acrylic lens diffuses light source and reduces glare, meets DLC 5.1 standards for UGR (Unified Glare Rating).
- Painted parts finished with high-gloss baked white enamel over rust inhibiting phosphate coating for maximum corrosion resistance.
- Paint after fabrication.

### MOUNTING:

- Suspended (chain or adjustable cable), surface mounting and pendant stem mounting.
- V-hook and 40" chain provided.
- Optional pendant monopoint box with side cover, surface mounting brackets.

### DISTRIBUTION:

- Standard distribution.
- Aisle distribution optional (special order, contact factory for lead time).

### LED:

- Bridgelux LED.
- Color Temperature: 3500 <sup>17</sup>/4000/5000 (K)
- LED module: High efficiency up to 136 LPW. (LHB-3G)
- Color Rendering Index: Ra > 80
- Service life: Greater than 70,000 hours.
- Poke in wire connectors.
- Calculated L70 : 122,000 hours

### ELECTRICAL:

- High power factor electronic driver, operate from a 120 ~ 277 Vac input range, 50 / 60 Hz.
- Dimming control: 10 ~ 100% (std.), 0-10V dim.
- To find an approved dimmer switch, please see table 1.
- Power Factor: + 0.9, Class 1 or Class 2 circuit.
- Efficiency: +87%
- Ambient Operating Temperature: -4°F (-20°C) ~ 122°F (50°C). optional -4°F (-20°C) ~ 131°F (55°C) available.
- 10kA/10kV level of surge protection available (optional).
- <ELCU-200>
- Guarantees emergency lighting remains ON or is turned on when power to the control device is lost.
- Interfaces with fire alarm panel or security system.
- "Watchdog" feature allows emergency loads to be controlled in tandem with normal power loads.
- UL listed for use in emergency circuits.

### LISTING:

- UL/CUL listed and labeled.
- Listed to UL 1598 and UL 8750.
- DLC listed. (premium) <sup>1</sup>
- Suitable for damp locations.
- ARRA compliant (optional).
- BAA compliant (optional).
- 5 years limited warranty.
- Bluetooth Mesh System available, please contact factory for more information.

### CONFIGURATIONS

		Input Watts	Lumen Output (Std.)	Lumen / Watts	Lumen Output (CL)	Lumen / Watts	Lumen Output (NL)	Lumen / Watts
LHB-3G	105LED	105W	14280 lm	136 lm/W	14716 lm	140.15 lm/W	15152 lm	144.30 lm/W
	130LED	130W	17680 lm		18220 lm		18759 lm	
	155LED	155W	21080 lm		21723 lm		22367 lm	
	170LED	170W	23120 lm		23826 lm		24531 lm	
	210LED	210W	28560 lm		29432 lm		30303 lm	
	255LED	255W	34680 lm		35738 lm		36797 lm	
	300LED	300W	40800 lm		42045 lm		43290 lm	
	400LED	400W	54400 lm		56060 lm		57720 lm	

\* Based on 5000K. (for 4000K, multiply by 0.9926)


# LHB-3G

ORDERING INFORMATION

EXAMPLE: LHB-3G-170LED-40K-UNV

MODEL	LED		COLOR TEMP.		CRI		VOLTAGE		LED DRIVER		DISTRIBUTION	
LHB-3G	105LED 130LED 155LED 170LED 178LED-4 210LED 255LED 300LED 400LED	105W LED 130W LED 155W LED 170W LED 178W LED (4FT) <sup>9</sup> 210W LED 255W LED 300W LED 400W LED	-35K -40K -50K	3500K <sup>14</sup> 4000K 5000K (Std.)	(Blank) C9	80CRI 90CRI (20% lower lumen than 80CRI)	UNV 347 480	120-277V 347V <sup>12</sup> 480V <sup>12</sup>	(Blank) PHSR BLT	0-10V dim to 10-100% (Std.) Philips Xitanium Sensor-Ready, Dali 5%-100% dim. Bluetooth Mesh System (contact factory for more information)	(Blank)	Standard

CONTROLS		LENS	
MS	On/off motion sensor without photocell, 120-277V <sup>2</sup>	(Blank)	Acrylic Frosted Lens
DMS	Daylight with motion sensor, 120-277V, Fail on	CL	Acrylic Clear Lens
HLMS	High/Low control of 0-10V dimming with motion sensor, 120-277V, Fail on	PFL	Polycarbonate Frosted Lens
DMSN	Daylight motion sensor switching photocell with high/low occupancy operation with 0-10V dimming control, 120-277V, Fail on	NL	No Lens
LSXR50	Aisle Motion Sensor, Fail on <sup>2</sup>		
LSXR-ADC	Switching photocell and dimming, 120-277V with 0-10V control, Fail on, default setting is "to off" <sup>2</sup>		
LSXR-ANL	Switching photocell and dimming with High/Low Occ. operation 120-277V with 0-10V control, default setting is "stay low dim" <sup>2</sup>		
RS-LRD	Remote programmer for LRD-509S and LRS-509S		
LOS-502S-x	Fixture external mount PIR occupancy sensor, no dimming support, 120/277V with DIP switch setting, Fail on (See note 11 to select lens for "x") <sup>5</sup>		
LRD-509S-x	Fixture external mount 0-10V SmartDIM or multi-level high/low dim control occupancy sensor, Fail on (*IR remote programmable), (See note 10 to select lens for "x") <sup>5,7</sup>		
LRS-509S-x	Fixture external mount Occupancy sensor control on/off daylight feature designed for all-purposes energy efficient lighting control, 120-277V, Fail on (*IR remote programmable), (See note 11 to select lens for "x") <sup>5,7</sup>		
HC403	Hytronik Daylight Harvesting Occupancy Sensor, adjustable via DIP switch <sup>13</sup>		
HRC-05	Remote control for HC403 sensor		

OPTIONS				LIGHTING CONTROL SYSTEM			
EMG8	1296 LUMEN EM Battery Backup	ACXX	Cable Kit	LUTRON VIVE	<Lutron Vive System Enabled>		
EMG15	2430 LUMEN EM Battery Backup	PW6	Pre-wired 6' Whip Flex		 Click Here!		
EMG20	3240 LUMEN EM Battery Backup	PMB	Pendant Monopoint Bracket 1/2" Hub				
EMG25	4050 LUMEN EM Battery Backup	PMB3	Pendant Monopoint Bracket 3/4" Hub				
EMG50	8100 LUMEN EM Battery Backup <sup>15</sup>	SMB	Surface Mount Bracket				
EM24	2754 LUMEN EM Battery Backup	WG	Wire Guard				
CWEM8	Cold Weather 8W EM (-20°C to 55°C)	CC	Custom Color (provide RAL#)				
CWEM13	Cold Weather 13W EM (-20°C to 55°C)	CS6-183-BK-L715P	6ft cord(3-wires 18 gauge) with NEMA L7-15P installed				
CWEM20	Cold Weather 20W EM (-20°C to 55°C)	HT	Industrial Grade Operating Temperature (-4°F (-20°C) ~ 131°F (55°C))				
EMC	CEC compliant EM <sup>3</sup>	AMB	Anti-Microbial Coating (Matte Skye White)				
ELCU-200	Fail-to-on Emergency lighting, UL924 <sup>4</sup>	ARRA	Assembled in USA for Buy American Act				
GTD	Bodine Generator Transfer Device	BAA	Buy American Act compliant				
GTD10DIM	Bodine Generator Transfer Device (0-10VDC Dimmer Override)	SSL	Silicone Sealed Lens				
GLR	Internal fast-blow fuse					SNH200	<EasySense> EasySense Outboard-mount occupancy sensing, daylight harvesting and task tuning in one device (Must be ordered with PHSR driver) <sup>6,8</sup>
SP	10kA/10kV Surge Protection					RS-IR	IR dongle v2.0 for EasySense control
				PPA102S		<Bluetooth> Bluetooth Powerpack (Consult factory for installation location)	
				EFS104	Bluetooth Enabled Occupancy sensor with Daylight Harvesting.		

NOTES:

- DesignLights Consortium® (DLC) qualified product. Not all versions of this product may be DLC qualified. Please check the DLC Qualified Products List at [www.designlights.org/QPL](http://www.designlights.org/QPL) to confirm which versions are qualified.
- Sensor is delivered at default. Check with factory for more details.
- Check with factory for more details.
- Shipped separately.
- Its default setting can be found on the IR-TEC installation instructions.
- See NFC and IR manual in the separate attachment. If your phone is not compatible, please order "RS-IR" and follow the manual.
- Order "RS-LRD" to adjust sensor setting.
- Refer to Advanced Grouping Datasheet for its default setting and compatible wireless switches.
- This model is DLC qualified and listed as "LHB-178LED/xx-UNV" at [www.designlights.org/QPL](http://www.designlights.org/QPL). xx is CCT type, 4000K or 5000K.

- A: Standard cone shape Lens @ 15' height (up to 30' coverage)
- B: Extra wide cone shape Lens @ 10' height (up to 60' coverage)
- C: High bay cone shape Lens @ 30' height (up to 90' coverage)
- D: Standard round shape Lens @ 20' height (up to 40' coverage)
- F: Extra wide dome shape Lens @ 20' height (up to 80' coverage)
- G: Aisle way arch shape Lens @ 40' height (up to 120' coverage)
- A: Standard cone shape Lens @ 15' height (up to 30' coverage)
- B: Extra wide cone shape Lens @ 10' height (up to 60' coverage)
- C: High bay on shape Lens @ 30' height (up to 90' coverage)
- D: Standard round shape Lens @ 20' height (up to 40' coverage)
- F: Extra wide dome shape Lens @ 20' height (up to 80' coverage)
- G: Aisle way arch shape Lens @ 40' height (up to 120' coverage)
- H: High bay dome shape Lens @ 50' height (up to 50' coverage)
- Emergency Ballast options are not available with 347V or 480V.
- See Table2 to find factory setting.
- Available with LHB-3G only.
- Available with 4ft length model only.

# LHB-3G



EFS104

**COMPATIBLE DIMMER SWITCH (TABLE 1)**

Model #	Brand	Compatible Dimmer Switch	
(Blank)	-	<Leviton>	IP710, DS710
		<Lutron>	NTSTV-DV, NFTV, DDTV
		<Legrand>	RH4FBL3PW
PHSR 1	Philips Xitanium Sensor-Ready	<Illumra>	<u>Single Rocker Self-Powered Light Switch (on/off, dim-up/down)</u> Illumra# ZBT-S1AWH Digi-Key# 1082-1033-ND <u>Dual Rocker Self-Powered Light Switch (on/off, dim-up/down, scene1,2)</u> Illumra# ZBT-S2AWH Digi-Key# 1082-1034-ND

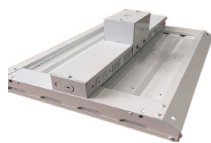
NOTES:

1. Recommended for EasySense System.

**HC403 FACTORY SETTING (TABLE 2)**

Detection Area	100%
Hold-time	5 sec
Daylight sensor	Disable
Stand-by period (tri-level control)	10 sec
Stand-by dimming level	10%

\* See a separate attachment to find more setting options.



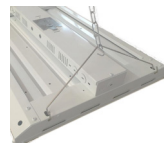
PMB  
(Pendant Hanger,  
1/2" or 3/4" Hub)



ACXX (Cable Kit)



WG (Wire Guards)



Chain Kit (Provided as standard)  
V-hook and 40" chain



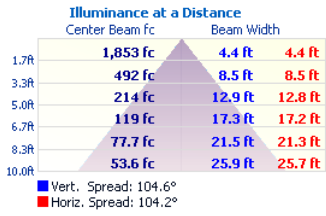
SMB  
(Surface Mounting)



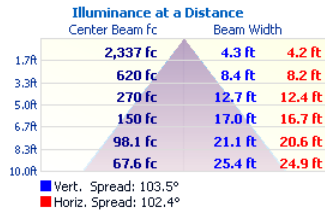
EasySense installation

# LHB-3G

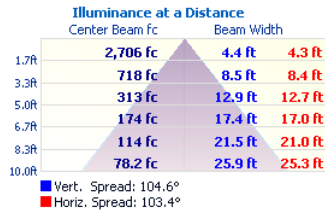
**LHB-3G-105LED**



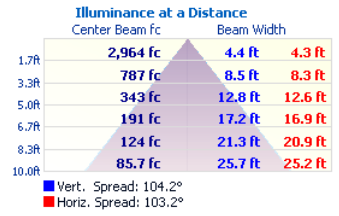
**LHB-3G-130LED**



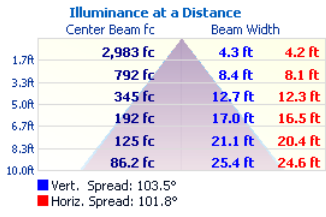
**LHB-3G-155LED**



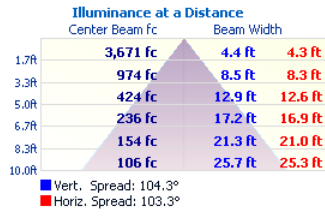
**LHB-3G-170LED**



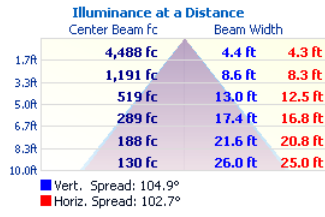
**LHB-3G-178LED**



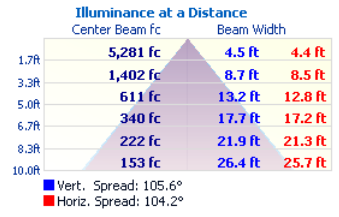
**LHB-3G-210LED**



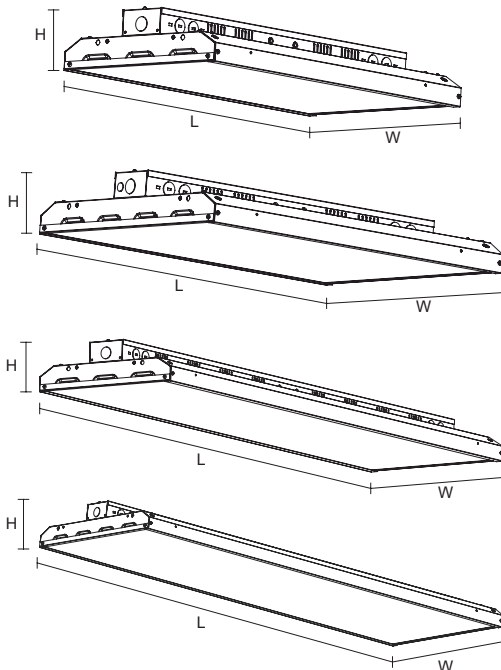
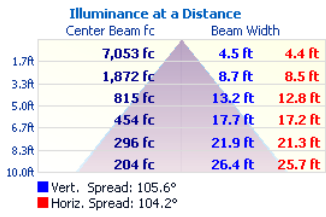
**LHB-3G-255LED**



**LHB-3G-300LED**



**LHB-3G-400LED**



All dimensions are in inches (millimeters).

**Specifications: LHB-3G/2FT (105W, 130W, 155W, 170W, 178W)**

Length: 23-13/16 (605)  
Width: 13 (330)  
Depth: 3-5/8 (92)  
Weight: 4.6lbs / 5.7kg

**Specifications: LHB-3G/2FT (210W)**

Length: 23-13/16 (605)  
Width: 17-5/16 (440)  
Depth: 3-5/8 (92)  
Weight: 4.6lbs / 5.7kg

**Specifications: LHB-3G/4FT (255W, 300W)**

Length: 45-7/8 (1166)  
Width: 13 (330)  
Depth: 3-5/8 (92)  
Weight: 17.8lbs / 8.1kg

**Specifications: LHB-3G/4FT (400W)**

Length: 45-7/8 (1166)  
Width: 17-5/16 (440)  
Depth: 3-5/8 (92.5)