

LHB-4G (Selectable)

Project Name:	
Type:	



APPLICATION

LHB-4G is a rugged, reliable, versatile and durable compact Linear high bay. The specially designed optical system can effectively reduce glare and provide comfortable illumination effect. Suitable for commercial, retail and institutional applications including gymnasiums, factories and warehouses.

FEATURES:

- The use of reliable and durable die-cast housings contributes to longer service life and increased efficiency.
- Rugged, one-piece die-cast aluminum housing features a rock-solid quality and performance.
- LED module and driver are separated and extend service life through convection cooling, thermal management.
- Compact design saves labor cost and improves installation efficiency.
- Innovative contractor-friendly packaging makes installation faster.
- Prismatic translucent lens is designed to shape the light uniformity and controls the glare light.
- Optional for aisle lens has an asymmetric distribution for aisle or rack areas.

MOUNTING:

- 5ft Aircraft cable mount (standard).
- Surface mount (option).
- Conduit pendant mount (option).

LED:

- Light engines are available in color selectable version, the CCT can be changed to two CCTs (4000K, 5000K).
- Scalable Lumen Packages from 8,200 to 74,000 Lumens.
- Color Rendering Index: Ra > 80
- Estimated 50,000 hours LED lifespan based on IES LM-80 results and TM-21 calculations.

ELECTRICAL:

- Universal 120-277VAC or 347-480VAC input voltage.
- Wattage adjustable: 100%, 80%, 60%, 40%.
- 0-10V dimming standard for a dimming range of 100% to 10%.
- Operating Temperature Range: -40°F ~ 122°F (-40°C ~ 50°C).
- <ELCU-200>
- Guarantees emergency lighting remains ON or is turned on when power to the control device is lost.
- Interfaces with fire alarm panel or security system.
- "Watchdog" feature allows emergency loads to be controlled in tandem with normal power loads.
- UL listed for use in emergency circuits.

LISTING:

- UL/CUL listed and labeled.
- DLC premium listed. ¹
- Suitable for damp locations.
- 5 years limited warranty.

ORDERING INFORMATION

EXAMPLE: LHB-4G-210LED-2T-UNV

MODEL	LED	COLOR TEMP.	CRI	VOLTAGE	LED DRIVER	DISTRIBUTION
LHB-4G	130LED 130W LED 160LED 160W LED 210LED 210W LED 260LED 260W LED 320LED 320W LED 420LED 420W LED 520LED 520W LED	2T 4000K/5000K Field Adjustable	(Blank) C9 80CRI 90CRI (20% lower lumen than 80CRI)	UNV 347 480 120-277V 347V 480V	(Blank) 0-10V dim to 10~100% (Std.) BLT Bluetooth Mesh System (contact factory for more information)	(Blank) 3060 Standard Aisle lighter

CONTROLS	LENS	OPTIONS
BRI823 Integrated bi-level PIR dimming & occupancy sensor BRI823-B-D-BLE Integrated bi-level PIR dimming & occupancy sensor with Bluetooth control ANT-6-4T Integrated PIR dimming & occupancy sensor ANT-6-4T-BLE-SR Integrated PIR dimming & occupancy sensor with Bluetooth control BRI819P-B-D External mount PIR dimming and daylight occupancy sensor BIR819P-B-D-BLE-SR External mount PIR dimming and daylight occupancy sensor with Bluetooth control	(Blank) Prismatic translucent acrylic lens	EMG8 1320 LUMEN EM Battery Backup EMG20 3300 LUMEN EM Battery Backup EMG30 4950 LUMEN EM Battery Backup ³ ELCU-200 Fail-to-on Emergency lighting, UL924 ² PMB3 Pendant Monopoint Bracket 3/4" Hub SMB Surface Mount Bracket WG Wire Guard ARRA Assembled in USA for Buy American Act

LIGHTING CONTROL SYSTEM	
PPA102S EFS104	<Bluetooth> Bluetooth Powerpack (Consult factory for installation location) Bluetooth Enabled Occupancy sensor with Daylight Harvesting.

NOTES:

1. DesignLights Consortium® (DLC) qualified product. Not all versions of this product may be DLC qualified. Please check the DLC Qualified Products List at www.designlights.org/QPL to confirm which versions are qualified.
2. Shipped separately.
3. Available with 347V, 480V only.

LHB-4G (Selectable)

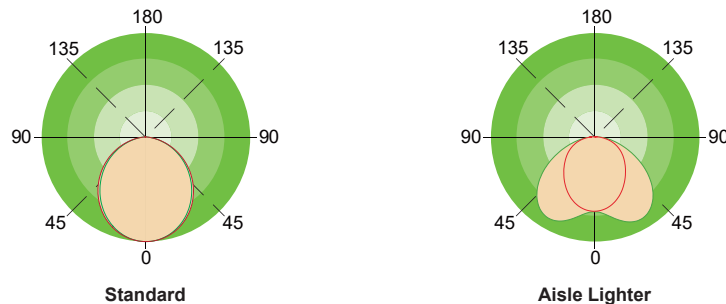
CONFIGURATIONS

**4000K CCT has a higher lumen output and efficiency than 5000K due to the characteristic of CCT selectable

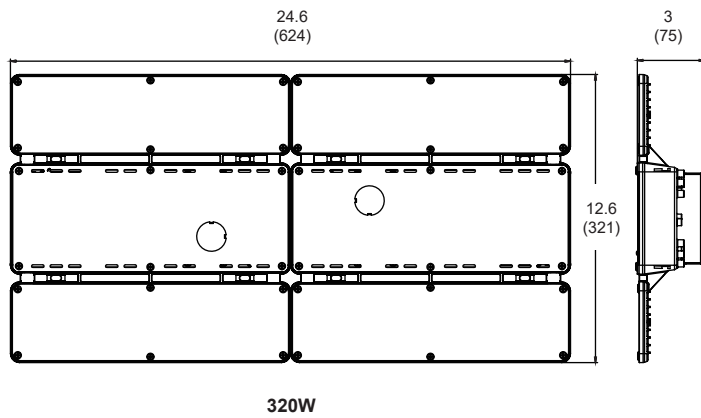
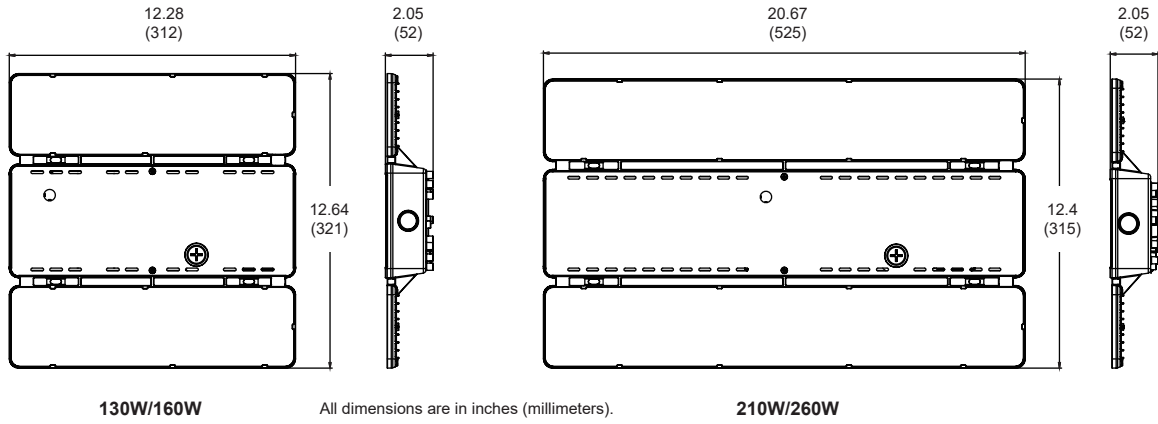
130LED					
SETTING	WATTS	4000K		5000K	
		Lumen Output	Lumen / Watts	Lumen Output	Lumen / Watts
100%	130LED	19000 lm	146 lm/W	18000 lm	138 lm/W
80%	104LED	15800 lm	152 lm/W	15000 lm	144 lm/W
60%	78LED	12500 lm	160 lm/W	11800 lm	151 lm/W
40%	52LED	8800 lm	169 lm/W	8200 lm	158 lm/W
160LED					
100%	160LED	25000 lm	156 lm/W	24000 lm	150 lm/W
80%	128LED	21000 lm	164 lm/W	20000 lm	156 lm/W
60%	96LED	16200 lm	169 lm/W	15500 lm	161 lm/W
40%	64LED	11200 lm	175 lm/W	10600 lm	166 lm/W
210LED					
100%	210LED	31000 lm	148 lm/W	30300 lm	144 lm/W
80%	168LED	25500 lm	152 lm/W	25000 lm	149 lm/W
60%	126LED	20000 lm	159 lm/W	19200 lm	152 lm/W
40%	84LED	14000 lm	167 lm/W	13500 lm	161 lm/W
260LED					
100%	260LED	37000 lm	142 lm/W	36200 lm	139 lm/W
80%	210LED	31000 lm	148 lm/W	30500 lm	145 lm/W
60%	165LED	25500 lm	155 lm/W	24800 lm	150 lm/W
40%	115LED	19000 lm	165 lm/W	18200 lm	158 lm/W
* 320LED (160LED X 2)					
100%	320LED	50000 lm	156 lm/W	48000 lm	150 lm/W
80%	256LED	42000 lm	164 lm/W	40000 lm	156 lm/W
60%	192LED	32400 lm	169 lm/W	31000 lm	161 lm/W
40%	128LED	22400 lm	175 lm/W	21200 lm	166 lm/W
* 420LED (210LED X 2)					
100%	420LED	62000 lm	148 lm/W	60600 lm	144 lm/W
80%	336LED	51000 lm	152 lm/W	50000 lm	149 lm/W
60%	252LED	40000 lm	159 lm/W	38400 lm	152 lm/W
40%	168LED	28000 lm	167 lm/W	27000 lm	161 lm/W
* 520LED (260LED X 2)					
100%	520LED	74000 lm	156 lm/W	72400 lm	139 lm/W
80%	420LED	62000 lm	164 lm/W	61000 lm	145 lm/W
60%	330LED	51000 lm	169 lm/W	49600 lm	150 lm/W
40%	230LED	38000 lm	175 lm/W	36400 lm	158 lm/W

* Two fixtures are joined.

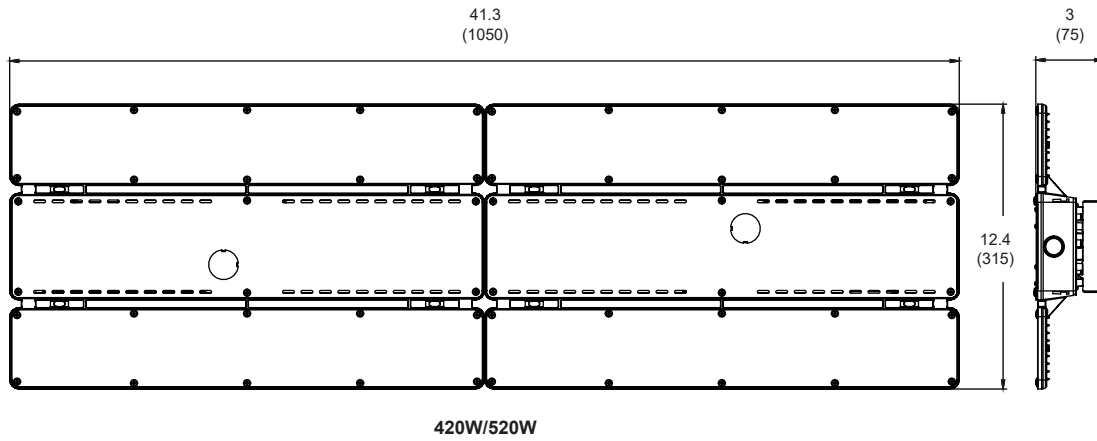
DISTRIBUTION



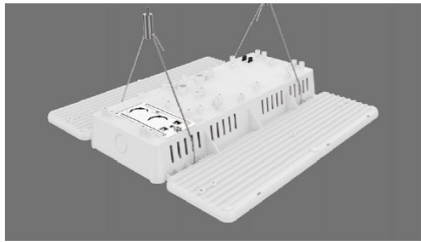
LHB-4G (Selectable)



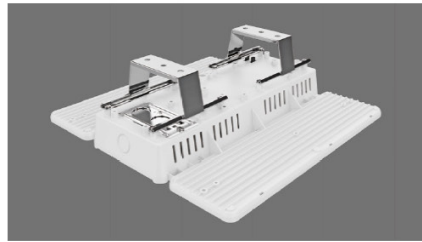
LHB-4G (Selectable)



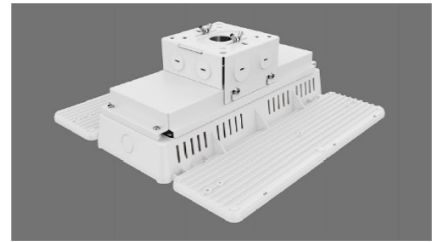
LHB-4G (Selectable)



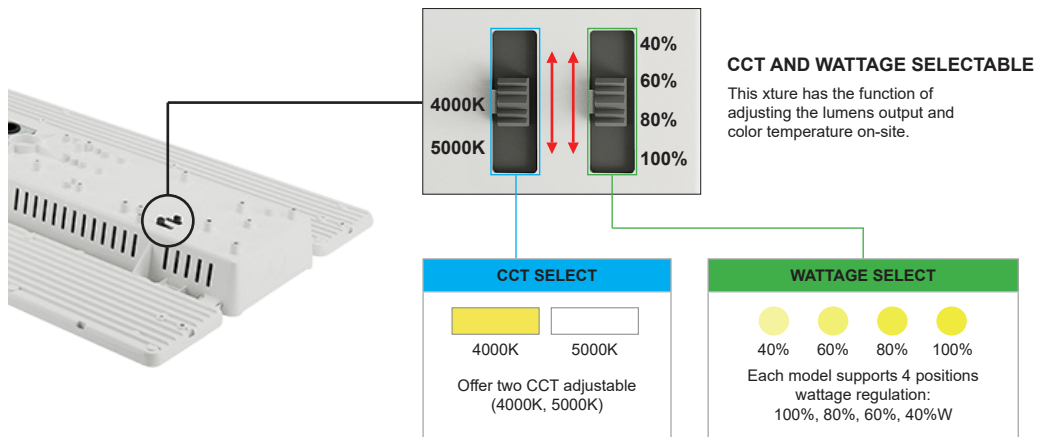
Aircraft cable Mounting (standard)



Surface Mounting



Conduit Pendant Mount



with ANT-6 integrated sensor