

**S**

**DISCONTINUED**  
**Limited Stock Available**



**APPLICATION**

The multi-purpose standard T8 strip light is a durable and efficient solution for both task and general lighting needs. The performance and application versatility can be increased by incorporating symmetrical or asymmetrical reflectors. It is an ideal choice for large storage areas, institutions, industrial, office and retail and general area lighting applications.

Project Name:	
Type:	

**FEATURES:**

- Die-formed steel channel with knock-outs for versatile configuration and simple mounting.
- Available with 1, 2, and 3 lamps, in single unit lengths or as tandem.
- Optional wire guards with snap-on clips available.
- Finish is high-gloss baked white enamel over rust inhibiting phosphate coating for maximum corrosion resistance.

**MOUNTING:**

- For surface, chain, swivel stem, unit or row installation.
- End plates can be modified for continuous row mounting option.
- Compatible with most ceiling types.

**LAMP:**

- Standard T8 lamp.
- Pressure-lock lamp holders or easy twist lock lamp sockets.
- Lamp not included.

**ELECTRICAL:**

- High power factor instant start electronic ballast for T8 lamps are sound rate A, minimum starting temperature 0°F (-18°C), <10% THD and input voltage ranges of 120 to 277 volts comes as standard.
- Ballast disconnect plug provided as standard.

**LISTING:**

- UL/CUL listed and labeled.
- Suitable for damp locations.
- ARRA compliant (optional).

**ORDERING INFORMATION**

**EXAMPLE: S-4-232-UNV**

MODEL	LENGTH	# OF LAMPS	LAMP TYPE	BALLAST
<b>S</b>	<b>2</b> 2' Length	<b>1</b>	<b>14T5</b> F14T5 (22")	<b>(Blank)</b> T8 Electronic, Instant Start, <10% THD or T5 Electronic, Programmed Start, <10% THD <b>LBF</b> T8 Electronic, Instant Start, Low Watt, <10% THD <b>HBF</b> T8 Electronic, Instant Start, High Light Output, <10% THD <b>PS</b> T8 Electronic, Programmed Start, <10% THD <b>LPS</b> Electronic, Programmed Start, Low Watt, <10% THD <b>HPS</b> Electronic Ballast, Programmed Start, High Light Output, <10% THD
	<b>3</b> 3' Length	<b>2</b>	<b>21T5</b> F21T5 (34")	
	<b>4</b> 4' Length	<b>3</b>	<b>28T5</b> F28T5 (46")	
	<b>6</b> 6' Length <sup>1</sup>	<b>4</b>	<b>17</b> F17T8 (24")	
	<b>8</b> 8' Length <sup>1</sup>	<b>6</b>	<b>25</b> F25T8 (36")	
			<b>25T8</b> F25T8 (48")	
			<b>28T8</b> F28T8 (48")	
			<b>32</b> F32T8 (48")	
			<b>48T8HO</b> F48T8HO (48") <sup>2</sup>	
			<b>59</b> F96T8 (96")	
			<b>72</b> F72T8 (72")	
			<b>72T8HO</b> F72T8HO (72")	
			<b>96T8HO</b> F96T8HO (96")	
			<b>24T5HO</b> F24T5HO (22")	
		<b>39T5HO</b> F39T5HO (34")		
		<b>54T5HO</b> F54T5HO (46")		

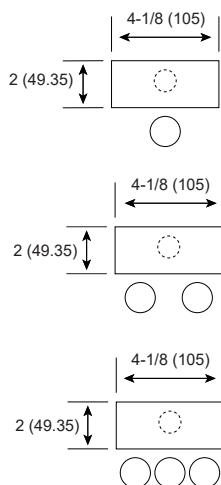
VOLTAGE		OPTIONS	
<b>UNV</b> 120-277V	<b>AB</b> Two Ballast AB Switch	<b>MS11</b> Master Slave w/ 11' Whip	
<b>120</b> 120V	<b>EM</b> Emergency Ballast <sup>3</sup>	<b>PW6</b> Pre-wired 6' Whip Flex #18/3	
<b>277</b> 277V	<b>EMC</b> CEC compliant EM <sup>5</sup>	<b>LS</b> Lamp Sleeve for Protect Lamps	
<b>347</b> 347V	<b>DM</b> Dimming Ballast <sup>4</sup>	<b>DEP</b> Double End Power for LED ready	
		<b>ARRA</b> Assembled in USA for Buy American Act	

**NOTES:**

1. Available tandem unit.
2. 1 or 2 lamps only.
3. Emergency Ballast options, see page 390.
4. Dimming Ballast options, see page 391.
5. Check with factory for more details.

**CONFIGURATIONS**

Series	Size	# Of Lamps	Lamp Type
S	2'	1, 2, 3	17T8, 14T5, 24T5HO
	3'	1, 2, 3	25T8, 21T5, 24T5HO
	4'	1, 2, 3	25T8, 28T5, 32T8, 54T5HO
	4'	1, 2	25T8, 28T5, 32T8, 54T5HO, 48T8HO
	6'	2	72T8, 72T8HO
	6'	2, 4, 6	25T8, 21T5, 24T5HO
	6'	1, 2	72T8, 72T8HO
	8'	1, 2	96T8, 96T8HO
	8'	2, 4, 6	25T8, 28T5, 32T8, 54T5HO



Specifications:

- 2FT Length: 24 (610)  
Weight: 6.9 lbs (3.13 kg)
- 3FT Length: 36 (915)  
Weight: 8.0 lbs (3.63 kg)
- 4FT Length: 48 (1219)  
Weight: 9.11 lbs (4.13 kg)
- 6FT Length: 72 (1828)  
Weight: 12.63 lbs (5.73 kg)
- 8FT Length: 96 (2439)  
Weight: 12.85 lbs (5.83 kg)

Width: 4-3/8 (111)  
Depth: 2 (49.35)

All dimensions are in inches (millimeters).

**Wiring diagram for LED ready**

Applied AC voltage depends on LED tube spec.

